

船名 SHIP NAME			
造船所 SHIP YARD			
装置名 SYSTEM TYPE	大項目 (LARGE CATEGORY)		機種名 (MODEL)
	GOVERNOR		MCG-402 + EAR-120
内容 CONTENT	ACTUATOR ALARM		

Dear Sirs and Madams

Please check below and try to reset.

1) GOVERNOR CONTROL UNIT

Please check ERROR CODE on GOVERNOR CONTROL UNIT.

The diagram shows the GOVERNOR CONTROL UNIT interface. It features two 3-digit displays labeled 'ADDRESS' and 'DATA'. Below the displays are four arrow buttons (up, down, left, right) and an 'ENT.' button. A legend indicates the functions of these buttons: a circle for READ, a circle with a diagonal line for WRITE, a circle with a diagonal line for WRITE ENABLE, and a circle with a diagonal line for PASSWORD UNPROTECTED. Below the legend are four buttons: 'READ MODE', 'WRITE MODE', 'CAUSE RESET', and 'LAMP TEST'. A table to the right lists error codes and their values.

ERROR CODE ADDRESS	VALUE
030	_____
031	_____
032	_____
033	_____
034	_____

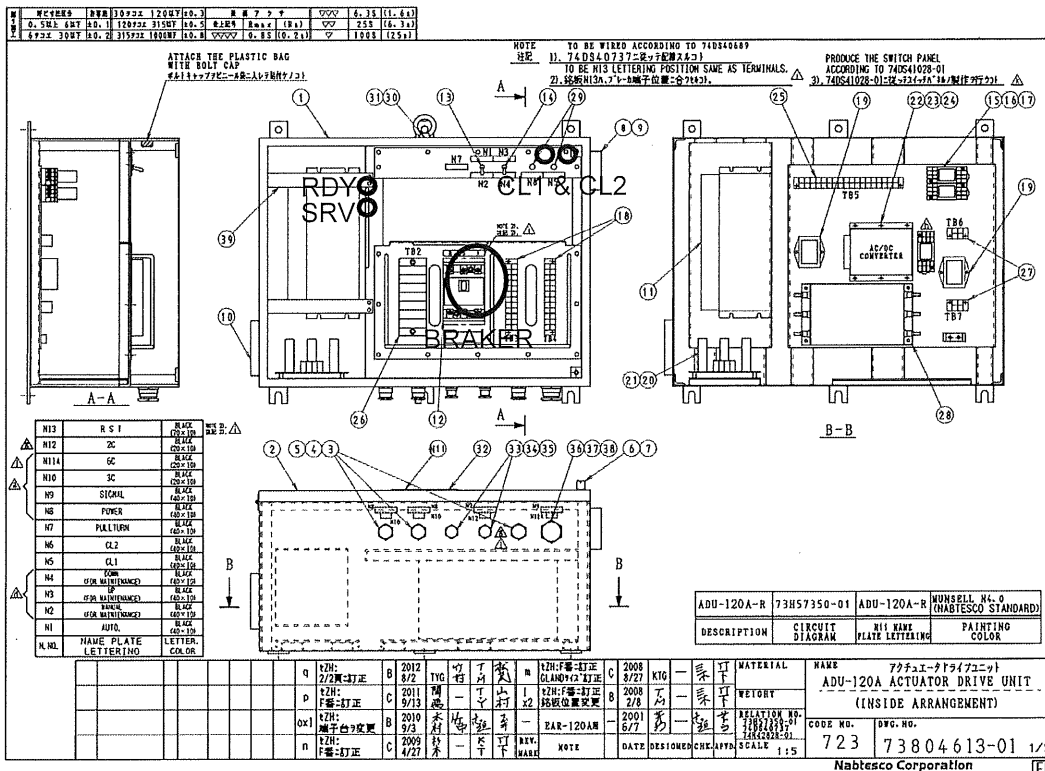
GOVERNOR CONTROL UNIT

1. Push "READ MODE", then ADDRESS will be flickering.
2. Select ADDRESS by using diamond cursor.
3. Then record DATA at each ADDRESS.

2) ACTUATOR DRIVE UNIT

Please check LED CONDITION of ACTUATOR DRIVE UNIT (see next page).

LED	CONDITION
CL1	ON / OFF
CL2	ON / OFF
RDY	GREEN / OFF
SRV	GREEN / RED / OFF



COPY by ArcSuite

3) POWER SOURCE

Please measure power source voltage at below TERMINALS.

TERMINAL	RESULT
R & S	AC _____ [V]
S & T	AC _____ [V]
T & R	AC _____ [V]
TB7-P1 & TB7-N1	DC _____ [V]

4) WIRING RESISTANCE

Once turn off BKAKER of ACUTAOTR DRIVE UNIT, then please measure resistance at below TERMINALS.

TERMINAL	RESULT
TB4-1 & TB4-2	_____ [Ohm]
TB4-4 & TB4-5	_____ [Ohm]
TB4-7 & TB4-8	_____ [Ohm]
TB2-U & TB2-V	_____ [Ohm]
TB2-V & TB2-W	_____ [Ohm]
TB2-W & TB2-U	_____ [Ohm]
TB2-BP & TB2-BN	_____ [Ohm]

5) FUEL LINKAGE

Dose fuel linkage move smoothly in LOCAL CONTROL ? Are there no sticking up ?

6) TRY CAUSE RESET

Turn on BRAKER and check LED CONDITION again.

LED	CONDITION
CL1	ON / OFF
CL2	ON / OFF
RDY	GREEN / OFF
SRV	GREEN / RED / OFF

Press CAUSE RESET and if ABNORMAL still exist, please check ERROR CODE again.

ERROR CODE ADDRESS	VALUE
030	_____
031	_____
032	_____
033	_____
034	_____

Sincerely yours.